

M-16DX 16-Channel Digital Mixer



Using the M-16DX as a DAW Controller

© 2007 Roland Corporation U.S.

All rights reserved. No part of this publication may be reproduced in any form without the written permission of Roland Corporation U.S.
SONAR™ and SONAR LE™ are trademarks of Twelve Tone Systems, Inc. Twelve Tone Systems, Inc. is not associated or affiliated with Roland in any manner. Logic Pro™ is a trademark of Apple Inc. Apple Inc. is not associated or affiliated with Roland in any manner. Live™ is a trademark of Ableton. Ableton is not associated or affiliated with Roland in any manner.

M16DXWS19

About the Workshop Booklets

The EDIROL M-16DX 16-Channel Digital Mixer delivers the power of digital mixing to musicians at an incredibly affordable price. This crystal-clear 24-bit digital mixer supports sample rates up to 96 kHz, and it's extremely flexible, with a wide range of analog and digital inputs and outputs, and effects. The M-16DX's USB connectivity makes it an ideal partner for a computer-based digital audio workstation, and features such as its pro EQ and the innovative Room Acoustic Control make it an excellent live mixer as well.

Each M-16DX Workshop Series booklet focuses on one M-16DX topic, and is intended as a companion to the *M-16DX Owner's Manual*.

The M-16DX Workshop booklets require M-16DX O.S. Version 2.00 or higher. You can download the latest O.S. for free from www.RolandUS.com/EDIROL.

About This Booklet

With the M-16DX Operating System Version 2.00 or higher, the M-16DX can act as a control surface for a DAW. You can use the M-16DX's knobs and buttons to control settings and operations on your digital audio workstation. This booklet explains how. (To learn the M-16DX-DAW basics, see the *Using the M-16DX with a DAW* Workshop booklet.)



In the M-16DX's Exclusive DAW-control mode, the knobs and buttons shown here in red can operate the controls of your DAW.

We'll assume you know how to operate your DAW. To learn about using it, consult its documentation. We'll also assume the M-16DX is connected to your computer, and that both are powered-up.

Understanding the Symbols in This Booklet

Throughout this booklet, you'll come across information that deserves special attention—that's the reason it's labeled with one of the following symbols.



A note is something that adds information about the topic at hand.



A tip offers suggestions for using the feature being discussed.



Warnings contain important information that can help you avoid possible damage to your equipment, your data, or yourself.

Hot Links

Each Workshop booklet is meant to be read in order from beginning to end. However, if we mention another section—and you see this arrow—you can click the arrow to jump there immediately.



The M-16DX's Two DAW-Controller Modes

The M-16DX's knobs and buttons can operate your DAW and the M-16DX at the same time, or primarily the DAW. In

- *Alt* (for "Alternative") mode—some of the M-16DX's knobs and buttons control DAW setting and operations, while others control the M-16DX's. Alternative mode is available for Twelve Tone Systems' SONAR, SONAR LE, Apple Logic Pro, and Ableton Live.
- *Exc* (for "Exclusive") mode—where the M-16DX's knobs and buttons primarily control the DAW, as shown to the left. Since it uses more M-16DX knobs and buttons, Exclusive mode offers more control over the DAW. Exclusive mode is available for SONAR/LE and Logic Pro.



When you enter DAW-control mode, the M-16DX's own settings remain as they were beforehand. When you leave the mode, the physical positions of the knobs and buttons may therefore no longer reflect the M-16DX's current settings. You can move a knob or button, or power the M-16DX off and on to get things to match up again.



With SONAR/LE, M-16DX DAW control is optimized for SONAR/LE 6.2 or higher. In this booklet, we'll use in SONAR 7, since it's the current SONAR version. (The M-16DX Version 2 software's M-16DX_v2_e1 PDF contains instructions for using Alternative mode with earlier versions of SONAR and SONAR LE.) Likewise, we'll use Logic Pro 8 here, though you can also use Logic Pro 7. We'll explain how to use the M-16DX with Live 6.



The M-16DX_v2_e1 PDF also includes overlays you can print and attach to your M-16DX to help you remember its DAW-control functions.

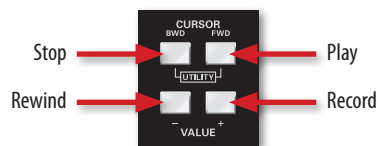
What DAW Control Gets You

M-16DX DAW Control In SONAR and SONAR LE

SONAR and SONAR LE Alternative Mode

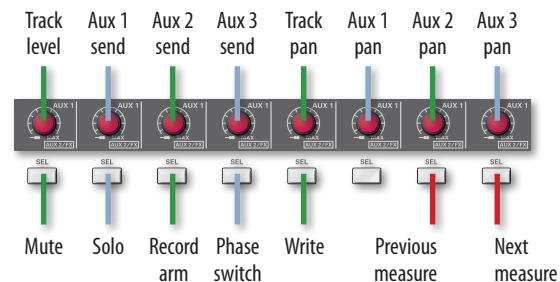
Transport Operation

In Alternative mode, the M-16DX's CURSOR BWD and FWD, and VALUE - and + buttons control transport functions in SONAR/SONAR LE, as shown on the M-16DX display.



Press STOP twice to return to the top of the song.

SONAR and SONAR LE Controlled Parameters



Except for the Previous measure and Next measure buttons, all of the controls shown here affect the currently selected SONAR/LE track.

In SONAR/LE, the track that's selected for DAW control has a colored strip at its left edge.

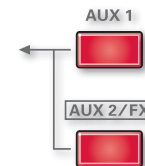


You can select the track you want to control in either of two ways:

- Select the tracks in SONAR/LE—by right clicking at the left edge of the desired track, and highlighting the popup text, as shown here.

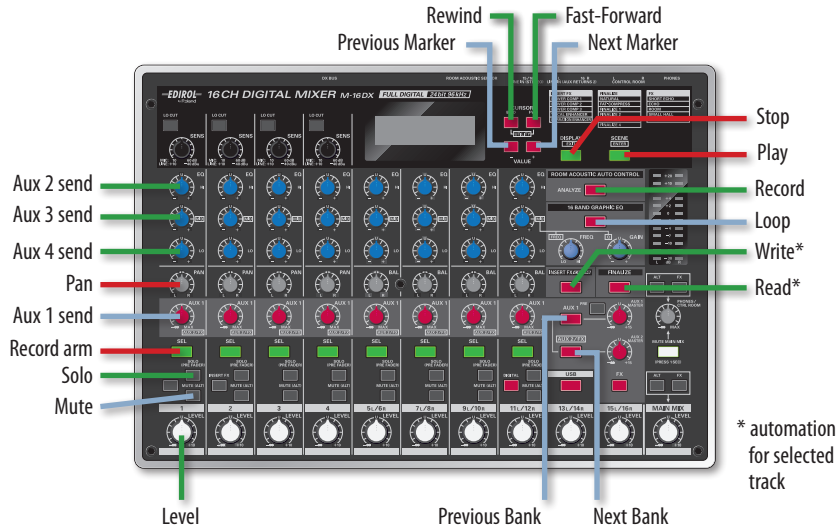


- Press the M-16DX's AUX 2 and AUX 1 buttons—to select the next or previous, respectively, track.



SONAR/SONAR LE Exclusive Mode

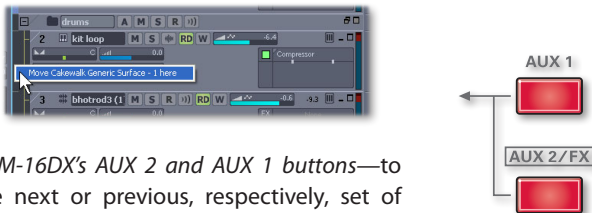
What Controls What



The controls shown here for Channel 1 are available on each M-16DX channel for controlling the corresponding track in SONAR/LE.

The M-16DX controls eight tracks at a time in Exclusive mode in SONAR/LE. You can select the bank of eight tracks you want to control in two ways:

- *Select the tracks in SONAR/LE*—by right clicking at the left edge of the first desired track, and highlighting the popup text, as shown here.



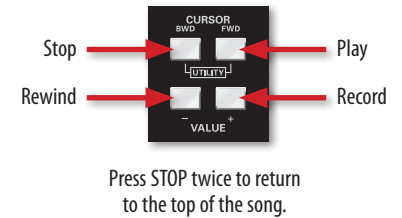
- *Press the M-16DX's AUX 2 and AUX 1 buttons*—to select the next or previous, respectively, set of eight tracks.

M-16DX DAW Control In Logic Pro

Logic Pro Alternative Mode

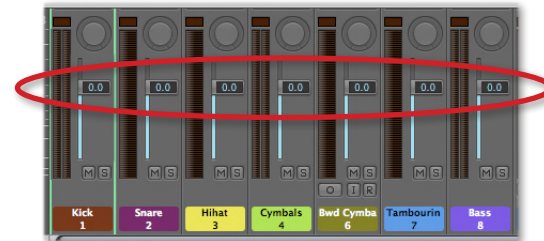
Transport Operation

In Alternative mode, the M-16DX's CURSOR BWD and FWD, and VALUE - and + buttons control Logic Pro transport functions, as shown on the display once you're in Alternative DAW mode.



Logic Pro Controlled Parameters

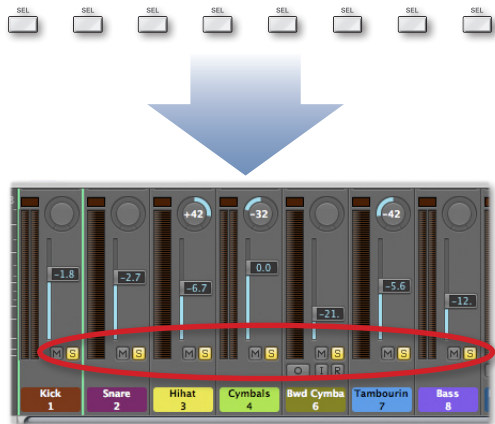
The M-16DX's channel AUX 1 knobs control the volume faders of eight Logic Pro tracks at a time.



To jump now to the setup instructions for SONAR and SONAR LE, click here.



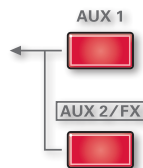
Each channel's SELECT button solos or un-solos the corresponding Logic Pro track.



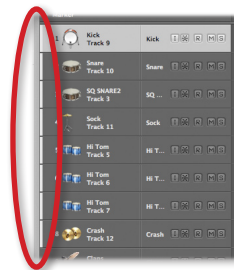
We're showing all of the tracks' Solo buttons turned on here so you can see them—soloing everything is pointless, of course.

You can select the eight tracks you want to control in either of two ways:

- Select the first of the eight tracks in Logic Pro—by clicking its name in the Arrange window.
- Press the M-16DX's AUX 2 and AUX 1 buttons—to select the next or previous bank of eight tracks.



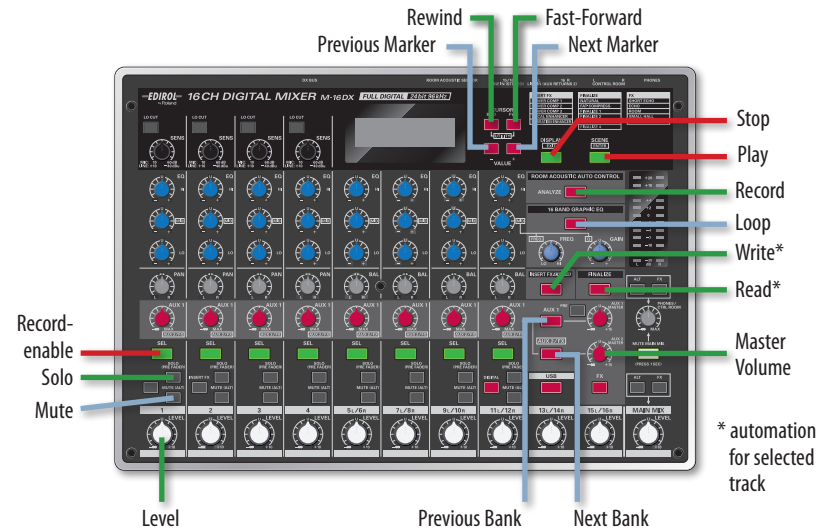
In Logic Pro, you can see the currently selected set of eight tracks—each track has a gray bar to its left.



Here we can see Tracks 1-8 selected.

Logic Pro Exclusive Mode

What Controls What



Record-enable, Solo, Mute, and Level controls are available on each M-16DX channel for controlling the corresponding track in Logic Pro.



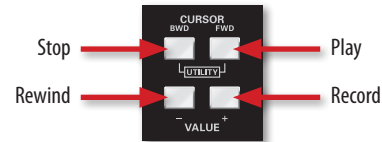
If you'd like to jump now to the setup instructions for Logic Pro, click here.



Live Alternative Mode

Transport Operation

In Alternative mode, the M-16DX's CURSOR BWD and FWD, and VALUE - and + buttons control Live transport functions, as shown on the display once you're in Alternative DAW mode.

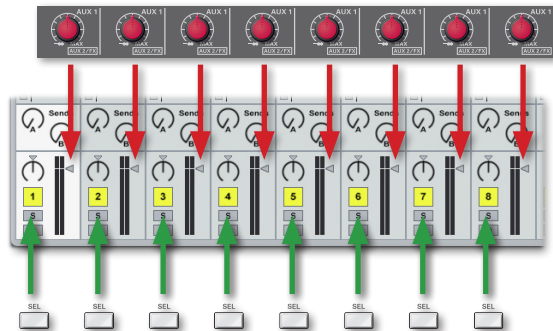


Press STOP twice to return to the top of the song.

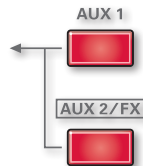


Logic Pro Controlled Parameters

The M-16DX's channel AUX 1 sends control the levels of eight Live tracks at a time. The M-16DX SELECT buttons toggle the tracks' Solo on and off.



You can select the eight tracks you want to control by pressing the M-16DX's AUX 2 and AUX 1 buttons.



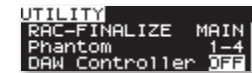
Setting Up the M-16DX as a DAW Controller



We'll assume that you've installed the necessary M-16DX drivers for your computer, and have successfully established audio connections between the M-16DX and your DAW, as described in the *Using the M-16DX with a DAW Workshop* booklet and the *Workshop* booklet specific to your DAW. We'll also assume the M-16DX and your DAW are powered up and connected.

Configuring DAW Control in the M-16DX

- 1 On the M-16DX, hold down the CURSOR BWD and FWD buttons at the same time to display the UTILITY menu, and then use the FWD button to highlight the DAW Controller value.



- 2 Press the + VALUE button to select the desired DAW-controller mode, if any. You can choose:
 - OFF—to de-activate the DAW-controller feature.
 - ALT—to select Alternative DAW-control mode.
 - EXC—to select Exclusive DAW-control mode.

- 3 Press CURSOR FWD once to highlight the DAW Select value.



- 4 Use the VALUE + and/or - buttons to select the built-in controller preset for your DAW:
 - GENERAL—for using the M-16DX with Logic Pro or Live.
 - SONAR—for using the M-16DX with SONAR LE or SONAR.

- 5 Press DISPLAY•EXIT when you're done.



If you'd like to jump now to the setup instructions for Live, click here.



Turning On DAW Control in the M-16DX



If you've successfully connected the M-16DX to your DAW, the M-16DX's USB button should be lit. If it's not, turn it on by pressing it.

After configuring DAW control as described above, turn on DAW control by pressing the lit USB button. When DAW control is turned on



- the USB button flashes.
- the M-16DX shows you're in DAW-control mode—by displaying the transport controls in Alternative mode, or "DAW" along the left edge of the screen in Exclusive mode.
- M-16DX buttons used in the currently selected DAW-controller mode light.

To turn off DAW control and return to normal M-16DX operations, press the flashing USB button so it lights solidly.



As you begin to adjust a DAW parameter with the M-16DX, move the desired M-16DX knob up and down past the parameter's starting value—this allows the M-16DX to take control of it.

Configuring Your DAW for M-16DX Control

Setting Up SONAR 7/SONAR LE for DAW Control

Basic Setup for Alternative and Exclusive Modes



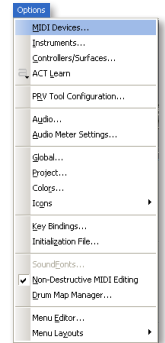
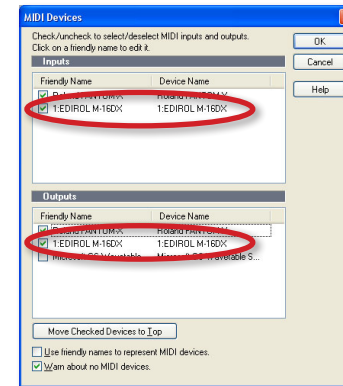
This setup procedure requires the Edirol M-16DX ALT_EXC.spp and M-16DX_EXC.kbn files contained in the M_UTILXX folder within the M-16DX's Version 2 or higher operating system installation folder. Locate these files before proceeding.



The following illustrations are of SONAR 7. The screens and procedures in SONAR LE 6.2 and higher are the same except where noted.

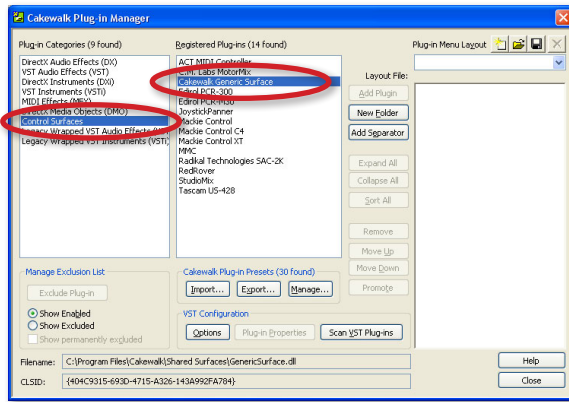
- 1 With the M-16DX connected to your PC, launch SONAR.
- 2 If the M-16DX's USB button isn't lit, press it to light it.
- 3 Press the M-16DX's USB button again so it flashes.
- 4 Select **MIDI Devices...** from SONAR's Options menu to open the MIDI Devices window.
- 5 In the MIDI

- **Inputs area**—checkmark 1:EDIROL M-16DX.
- **Outputs area**—checkmark 1:EDIROL M-16DX.

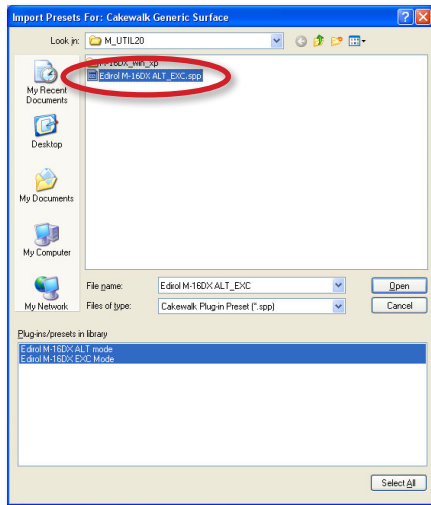


In SONAR LE, you activate MIDI inputs and outputs by highlighting them. To highlight a device, click on it so that it has a blue background. (To turn off a device, click it again to remove the highlight.)

- 6 Click OK to close the MIDI Devices window.
- 7 Select **Cakewalk Plug-in Manager** from the Tools menu to open the Cakewalk Plug-in Manager.
- 8 Click **Control Surfaces** in the left-hand pane, and then select **Cakewalk Generic Surface** in the middle pane as shown in the following illustration.

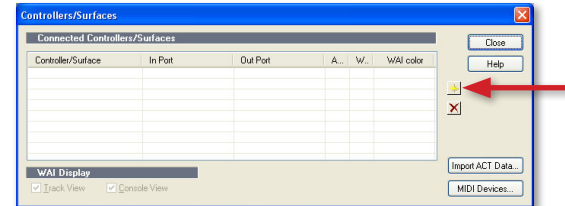


- 9 Click Import...
- 10 Navigate to the Edirol M-16DX ALT_EXC.spp file and select it as shown here.

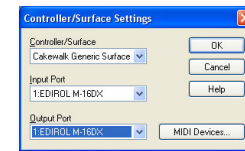


- The .spp file adds the M-16DX's control assignments to SONAR/LE.
- 11 Click Open to import the file.
 - 12 Click Close in the Cakewalk Plug-in Manager window.

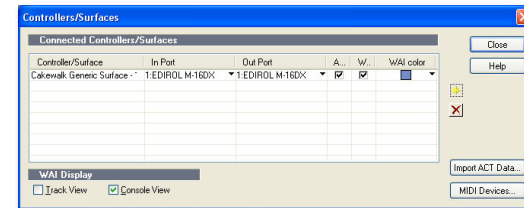
- 13 In the Options menu, select **Controllers/Surfaces...**
- 14 In the Controllers/Surfaces window, click the Add new Controller/Surface button—the red arrow points at the button in this illustration—to open the Controller/Surface Settings window.



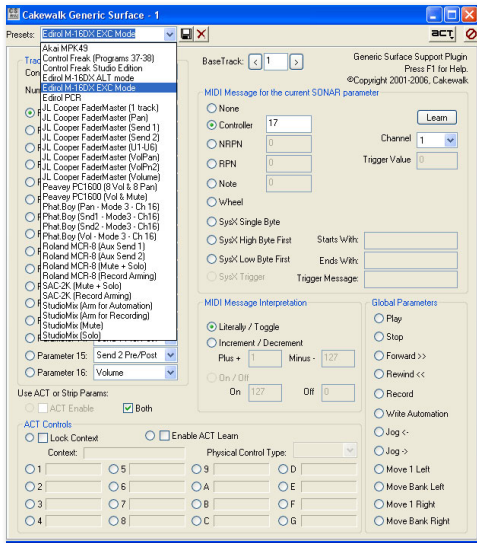
- 15 In the Controller/Surface Settings window, set Controller/Surface to **Cakewalk Generic Surface**, and the Input Port and Output Port settings to **1:EDIROL M-16DX**, as shown here.



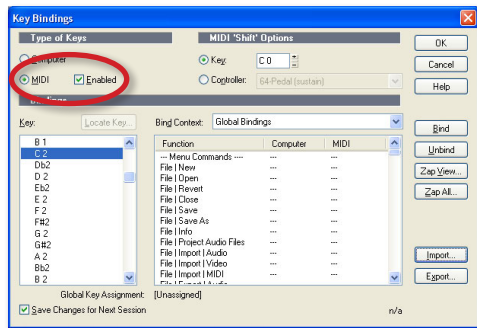
- 16 Click OK to close the window and reveal the newly created control surface.



- 17 Click Close.
- 18 From the Tools menu, select Cakewalk Generic Surface-1 to open the Cakewalk Generic Surface-1 properties window.
- 19 In the Presets popup, select the Edirol M-16DX ALT (for "Alternative") or EXC (for "Exclusive") Mode preset, depending on whether you want to use the M-16DX in Alternative or Exclusive DAW-control mode as shown in the following illustration.



- 20 Close the window.
- 21 Select **Key Bindings** from the Options menu.
- 22 Click the MIDI radio button and check the Enabled box as shown here.



- 23 Click **Import...**
- 24 Navigate to the M-16DX_EXC.kbn file, highlight it, and click **Open** to import the file. This file associates the M-16DX's buttons and knobs with SONAR/LE features.

25 Click **OK** to close the Key Bindings window.

You're now ready to control SONAR or SONAR LE with the M-16DX.

If SONAR still isn't responding to the M-16DX, it may have become confused. Return to the Options menu's **Controllers/Surfaces** window, select **Cakewalk Generic Surface** and Click the **Delete Selected Controller/Surface** button. Click the **Add New Controller/Surface** button, and in the window that opens, select **Cakewalk Generic Surface** as the Controller/Surface value. Then select **1:EDIROL M-16DX** as both the Input Port and Output Port values. Click **OK**, then **Close**, and then repeat Steps 18 through 20. If this still doesn't work, quit SONAR and try the procedure in this note again.

To jump back to the pre-programmed SONAR and SONAR LE assignments for Alternative mode, click here.

To jump back to the pre-programmed SONAR and SONAR LE assignments for Exclusive mode, click here.

Adding Control of More SONAR/LE Elements

You can teach parameters within SONAR and SONAR LE—including plug-in parameters—to respond to the following currently unassigned M-16DX knobs and buttons using the SONAR's ACT feature.

- EQ *FREQ knob*
- EQ *GAIN knob*
- AUX 1 *MASTER knob*
- AUX 2 *MASTER knob*
- FX *button*

To learn how to teach SONAR/LE to respond to new controls from the M-16DX:

- 1 Create a new controller by repeating Steps 13-17 in the previous section, selecting **ACT MIDI Controller** in the Controller/Surface Popup instead of **Cakewalk Generic Surface**.
- 2 In SONAR's built-in Help, see "Assigning Controls on Your Controller/Surface to Cells in the ACT MIDI Property Page" for the rest of the required steps.

Setting Up Logic Pro 8 for M-16DX DAW Control

Basic Setup for Alternative and Exclusive Modes

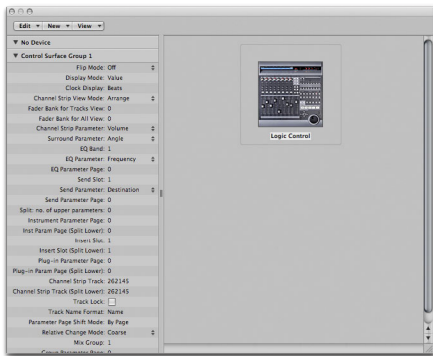


If the M-16DX's USB button is flashing, press it once so it's not before proceeding. By activating DAW mode on the M-16DX at the right moment, Logic Pro automatically configures itself for the M-16DX.

To configure Logic Pro 8 for control from the M-16DX, follow these steps:

- 1 With the M-16DX connected to your Mac, launch Logic Pro 8.
- 2 If the M-16DX's USB button isn't lit, press it to light it.
- 3 Press the M-16DX's USB button again so it flashes.

In Logic Pro 8, the DAW Surfaces Setup window automatically opens and displays a Logic Control control surface—the M-16DX emulates an Emagic Logic Control when it's controlling Logic Pro.



- 4 Close the DAW Control Surface Setup window in Logic Pro 8.

You're ready to control Logic Pro 8 from the M-16DX in Alternative mode.



To jump back to the pre-programmed Logic Pro 8 assignments for Alternative mode, click here.

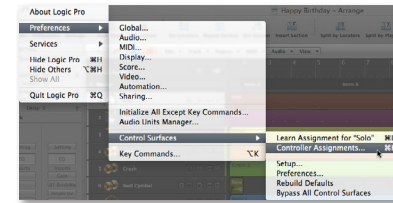


Additional Setup for Exclusive Mode

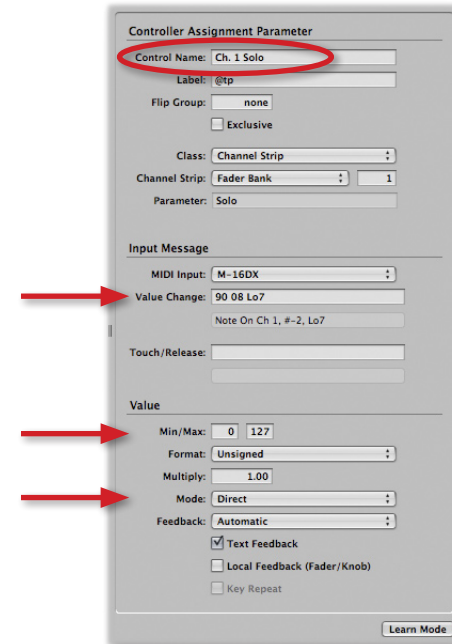
Optimizing Solo and Mute Control in Logic Pro

To get Logic Pro's Solo and Mute switches to mirror the M-16DX's:

- 1 From the Logic Pro menu, select **Preferences > Control Surfaces > Controller Assignments...**



- 2 Press Input Channel 1's Solo button on the M-16DX so it latches in. Logic Pro's Controller Assignments window selects Track 1's assignment in the right-hand part of the window as circled here.



- 3 In the window's Value Change field, change "90 08 07" to "90 08 Lo7"—see the top red arrow in the previous illustration.
- 4 Set the Value Min/Max fields to 0 and 127, and set the Value Mode popup to **Direct**.
- 5 On the M-16DX, press Input Channel 1's Mute button so it latches in. Track 1's Mute assignment is selected for setup.
- 6 In the Value Change field, change "90 10 07" to "90 10 Lo7."
- 7 Set the Value Min/Max fields to 0 and 127.
- 8 Set the Value Mode popup to **Direct**.
- 9 Repeat Steps 2-9 for M-16DX Channels 2-8, corresponding to Logic Pro's Tracks 2-8.



These steps configure Solo and Mute for the first eight Logic Pro tracks. To set up other sets of eight tracks, press the M-16DX's AUX 1 or 2 knob to select the desired track bank, and then repeat Steps 2-9.

Adding Control of More Logic Pro Elements

Logic Pro can learn to respond to the following unassigned M-16DX knobs and buttons:

- *channel EQ knobs* • *channel AUX knobs* • *channel PAN knobs*
- *EQ FREQ and GAIN knobs* • *AUX 1 MASTER knob* • *FX button*

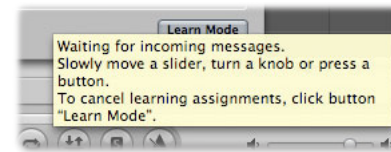
As an example, here's how to teach Logic Pro to respond to the PAN/BALANCE knobs on the M-16DX channel strips. You can use the same procedure for teaching Logic Pro to respond to any of the M-16DX's knobs or buttons.

- 1 With the Controller Assignments window already open, open the Mixer pane in Logic Pro's Arrange window.

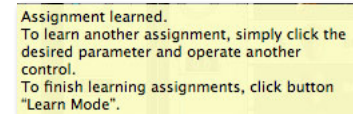


If you're working with two monitors, the following process will be easier if you move the Controller Assignments and Arrange windows onto different displays since you'll be jumping between them. If you're on a single display, you may need to move the Controller Assignments window out of the way when you need to get to Mixer parameters.

- 2 In the Controller Assignments window, click Learn Mode in the lower right-hand corner so it darkens—a tool tip appears telling you that Logic Pro's ready to learn a new assignment.



- 3 In the Mixer window, touch Channel 1's Pan knob with your mouse.
- 4 On the M-16DX, move Channel 1's Pan knob—Logic Pro tells you it's learned the new assignment.



If a dialog appears telling you an M-16DX control is already assigned to another parameter, you can choose to use the M-16DX control for both parameters or re-assign it only to the new parameter.

- 5 In the Controller Assignment window, make sure that Format in the Value area is set to **Unsigned**, and that Value Mode is set to **Direct**.
- 6 Repeat Steps 3-5 for Channels/Tracks 2-8.
- 7 To set up panning control for additional sets of eight tracks, select the desired track bank, and then repeat Steps 3-6.
- 8 When you're done setting up panning control, click Learn Mode again so the button turns off, taking you out of Learn mode.



When you're setting up control from an M-16DX knob, make sure that the Controller Assignment window's Value area Format value is set to **Unsigned**, and that Mode is set to **Direct**.

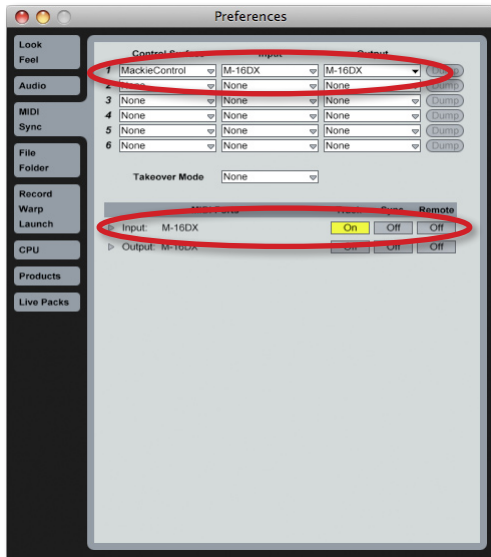


To jump back to the pre-programmed Logic Pro 8 assignments for Exclusive mode, click here.



Setting Up Live 6 for M-16DX DAW Control

- 1 With the M-16DX connected to your Mac, launch Live.
- 2 If the M-16DX's USB button isn't lit, press it to light it.
- 3 Press the M-16DX's USB button again so it flashes.
- 4 Got to the Live menu, and select Preferences...
- 5 In the Preferences window, click the MIDI Sync tab to display Live's MIDI and Sync settings.
- 6 In the MIDI Ports section, turn on the M-16DX's Track switch as shown below.
- 7 Select **Mackie Control** as your control surface, and then select **M-16DX** from its input popup.



- 8 Close the Preferences window.

The End

We hope you've found this workshop helpful. You'll find other M-16DX Workshop booklets available for downloading at www.RolandUS.com/EDIROL.



To jump back to the pre-programmed Live assignments for Alternative mode, click here.

