

M-16DX 16-Channel Digital Mixer



Using the M-16DX with Digital Performer

© 2008 Roland Corporation U.S.

All rights reserved. No part of this publication may be reproduced in any form without the written permission of Roland Corporation U.S.

Digital Performer™ is a trademark of Mark of the Unicorn, Inc.

Mark of the Unicorn, Inc. is not associated or affiliated with Roland in any manner.

M16DXWS11

About the Workshop Booklets

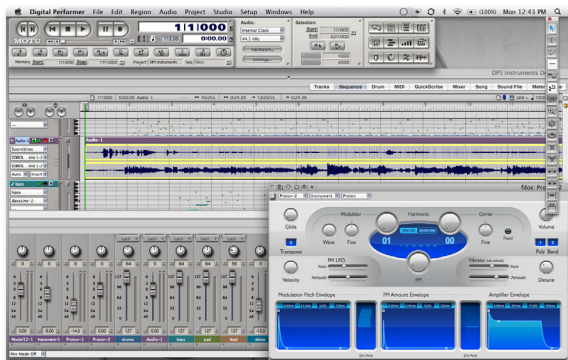
The EDIROL M-16DX 16-Channel Digital Mixer delivers the power of digital mixing to musicians at an incredibly affordable price. This crystal-clear 24-bit digital mixer supports sample rates up to 96 kHz, and it's extremely flexible, with a wide range of analog and digital inputs and outputs, and effects. The M-16DX's USB connectivity makes it an ideal partner for a computer-based digital audio workstation, and features such as its pro EQ and the innovative Room Acoustic Control make it an excellent live mixer as well.

Each M-16DX Workshop Series booklet focuses on one M-16DX topic, and is intended as a companion to the *M-16DX Owner's Manual*.

The M-16DX Workshop booklets require M-16DX O.S. Version 2.00 or higher. You can download the latest O.S. for free from www.RolandUS.com/EDIROL.

About This Booklet

The M-16DX makes a great companion to a digital audio workstation—or “DAW”—on a personal computer. To learn the basics of using the M-16DX with a DAW, see the Workshop booklet *Using the M-16DX with a DAW*. Then come back here for specific instructions on using the M-16DX with Mark of the Unicorn's Digital Performer™, which we'll call “Performer” from now on.



We'll assume you know how to operate Performer. To learn about using Performer, consult its documentation. We'll also assume the M-16DX is connected to your Mac, and that it's powered-up.

Understanding the Symbols in This Booklet

Throughout this booklet, you'll come across information that deserves special attention—that's the reason it's labeled with one of the following symbols.



A note is something that adds information about the topic at hand.



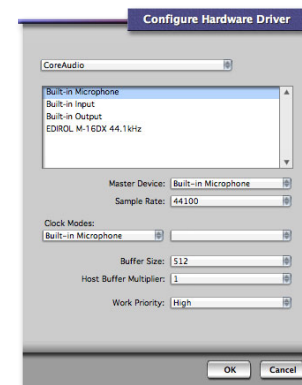
A tip offers suggestions for using the feature being discussed.



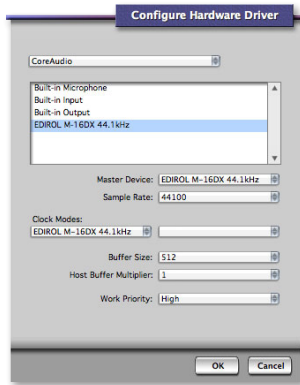
Warnings contain important information that can help you avoid possible damage to your equipment, your data, or yourself.

Configuring Performer's Audio Hardware

- 1 Set the M-16DX to the sampling rate you want to use. (You can change it later—see the *Using the M-16DX with a DAW* Workshop booklet for details.)
- 2 If you launch Performer with no outputs selected, a dialog appears in which you click OK to open the Configure Hardware Driver window. If Performer's already running, click the Control Panel's Hardware... button to open the Configure Hardware window, or go to the Setup menu and select **Configure Hardware Driver** from the Configure Audio System submenu.



- In the Configure Hardware Driver window, select EDIROL M-16DX [the M-16DX's current sampling rate].

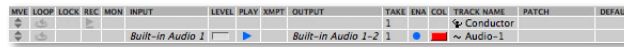


- Click OK.

Setting Up a Track for Recording

Selecting Audio to Record

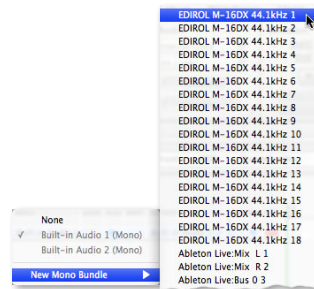
- In the Tracks window, create a new mono track or locate the already-existing track you want to record. (We'll talk about stereo tracks in a moment.)
- Click on the track's INPUT area to show the INPUT popup menu.



INPUT area

OUTPUT area

- The first time you select an M-16DX input, choose the input from the New Mono Bundle submenu.



Once you've created a new mono bundle for the input as described above, you can select the channel from the INPUT popup directly.



You can record in stereo from the M-16DX using a stereo Performer track, and by creating a new stereo bundle. (Only select Inputs 13/14 or 17/18 when the M-16DX's USB button isn't lit to avoid feedback.)

Selecting the Track's Outputs

- Click and hold on the track's OUTPUT area to show the OUTPUT popup menu.
- The first time you select the M-16DX's outputs, choose them from the New Stereo Bundle submenu.



As with the track's input, once you've created a stereo bundle for the M-16DX's outputs, you can simply select them from the OUTPUT popup.



Once you've configured the track's input and output, its REC (Record) and MON (Monitor) buttons become available.

Turn Off Software Monitoring

- In the track you're recording, make sure the MON button is turned off.



Mon button off



As we noted in the *Using the M-16DX with a DAW Workshop* booklet, you do have the option of listening through Performer if you want to hear its effects as you record. However, since you'll encounter latency doing this, we recommend listening directly through the M-16DX.



Mon button on



If you *do* decide to listen through Performer, you can hear your live input by turning on the track's MON button.

The End

We hope you've found this workshop helpful. You'll find other M-16DX Workshop booklets available for downloading at www.RolandUS.com/EDIROL.