

M-16DX 16-Channel Digital Mixer



Using the M-16DX with Logic Pro™

© 2007 Roland Corporation U.S.

All rights reserved. No part of this publication may be reproduced in any form without the written permission of Roland Corporation U.S.

Apple™ and Logic Pro™ are trademarks of Apple Inc.

Apple Inc. is not associated or affiliated with Roland in any manner.

M16DXWS09

About the Workshop Booklets

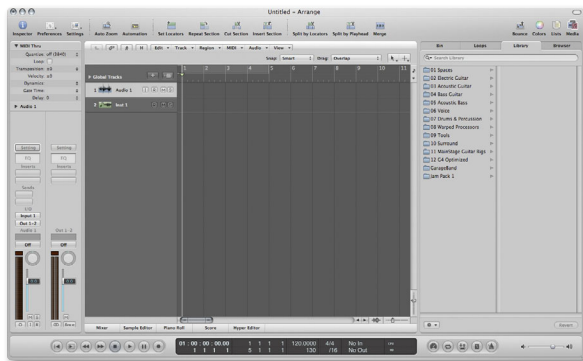
The EDIROL M-16DX 16-Channel Digital Mixer delivers the power of digital mixing to musicians at an incredibly affordable price. This crystal-clear 24-bit digital mixer supports sample rates up to 96 kHz, and it's extremely flexible, with a wide range of analog and digital inputs and outputs, and effects. The M-16DX's USB connectivity makes it an ideal partner for a computer-based digital audio workstation, and features such as its pro EQ and the innovative Room Acoustic Control make it an excellent live mixer as well.

Each M-16DX Workshop Series booklet focuses on one M-16DX topic, and is intended as a companion to the *M-16DX Owner's Manual*.

The M-16DX Workshop booklets require M-16DX O.S. Version 1.22 or higher. You can download the latest O.S. for free from www.RolandUS.com/EDIROL.

About This Booklet

The M-16DX makes a great companion to a digital audio workstation—or “DAW”—on a personal computer. To learn the basics of using the M-16DX with a DAW, see the Workshop booklet *Using the M-16DX with a DAW*. After you've checked that out, come back here for specific instructions on using the M-16DX with Apple's Logic Pro™.



We'll assume you know how to operate Logic Pro. To learn about using Logic Pro, consult the built-in documentation in its Help menu. We'll also assume the M-16DX is connected to your Mac, and that it's powered-up.

Understanding the Symbols in This Booklet

Throughout this booklet, you'll come across information that deserves special attention—that's the reason it's labeled with one of the following symbols.



A note is something that adds information about the topic at hand.



A tip offers suggestions for using the feature being discussed.

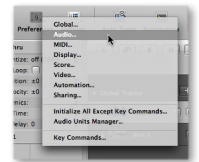


Warnings contain important information that can help you avoid possible damage to your equipment, your data, or yourself.

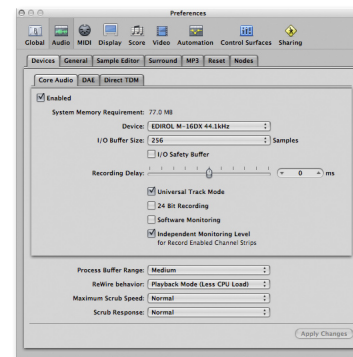
Setting Logic Pro Preferences

To configure Logic Pro so it's using the M-16DX for its inputs and outputs:

- 1 Click and hold down the Preferences button in the Arrange window tool bar, and select Audio... to open the Core Audio tab of the Preferences window. (If you prefer, you can do the same thing from the Logic Pro menu.)



If this isn't what you see, click the Core Audio tab.



- 2 If the Device popup menu doesn't already show "EDIROL M-16DX [the M-16DX's current sample rate]", select the M-16DX from the menu.

Turn Off Software Monitoring



As we noted in the *Using the M-16DX with a DAW Workshop* booklet, you do have the option of listening through Logic Pro if you want to hear its effects as you record. However, since you'll encounter latency doing this, we recommend listening directly through the M-16DX.

- 1 In the Core Audio tab, make sure Software Monitoring is unchecked.

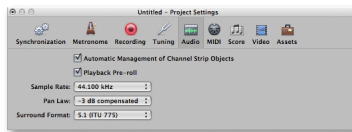
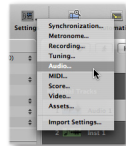


If you *do* decide to listen through Logic Pro, once you've check-marked Software Monitoring, you can hear your live input even before arming a track for recording by lighting the track's Input button.

Setting the Sample Rate

Your Logic Pro project must be operating at the same sampling rate as the M-16DX to successfully capture its audio. To change the LogicPro project sample rate:

- 1 Click and hold down the Settings button in the Arrange window tool bar, and select Audio... to open the Project Settings window. (If you prefer, you can do the same thing from the File menu's Project Settings sub-menu.)



- 2 Set the Sample Rate popup menu's value to match the M-16DX sample rate.

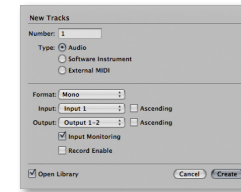


To learn how to check and/or change the M-16DX's sample rate, see the *Getting Started with the M-16DX Workshop* booklet.

Setting Up a Track for Recording

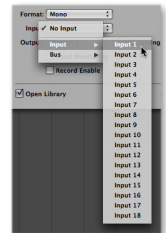
Selecting Audio to Record

- 1 Click the + button above the track list to open the New Tracks window.



- 2 Set the window's parameters to create one new audio track, and choose the desired mono or stereo format for your track.
- 3 Select the desired M-16DX input from the Input menu. To record

- a *mono input channel to which a mic or instrument is connected*—select the desired channel from 1 to 4.
- a *stereo input channel to which you've connected a keyboard or some other stereo device*—select the desired channel from **Input 1-2** to **Input 15-16**.
- *the stereo mix bus*—select **Input 17-18**.
- a *pair of mono channels onto a stereo Logic Pro track*—select **Input 1-2** or **Input 3-4**.
- *one side of a stereo channel*—select the desired channel from **Input 5** through **Input 12**.



Only select Input 17-18 when the M-16DX's USB button isn't lit.



If you've already created the track you want to use, set its format and select the desired M-16DX input in the Arrange window's Inspector.

The End

We hope you've found this workshop helpful. You'll find other M-16DX Workshop booklets available for downloading at www.RolandUS.com/EDIROL.

