

## M-16DX 16-Channel Digital Mixer



## Using the M-16DX with GarageBand™

© 2007 Roland Corporation U.S.

All rights reserved. No part of this publication may be reproduced in any form without the written permission of Roland Corporation U.S.

Apple™ and GarageBand™ are trademarks of Apple Inc.

Apple Inc. is not associated or affiliated with Roland in any manner.

**M16DXWS07**

## About the Workshop Booklets

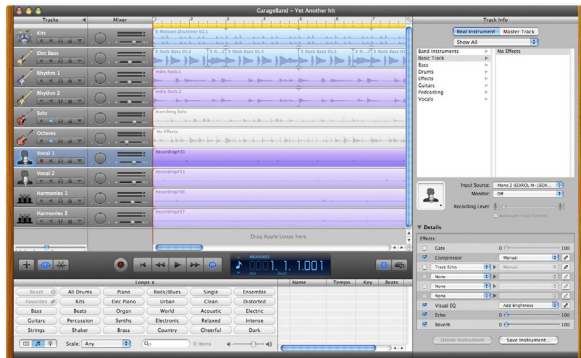
The EDIROL M-16DX 16-Channel Digital Mixer delivers the power of digital mixing to musicians at an incredibly affordable price. This crystal-clear 24-bit digital mixer supports sample rates up to 96 kHz, and it's extremely flexible, with a wide range of analog and digital inputs and outputs, and effects. The M-16DX's USB connectivity makes it an ideal partner for a computer-based digital audio workstation, and features such as its pro EQ and the innovative Room Acoustic Control make it an excellent live mixer as well.

Each M-16DX Workshop Series booklet focuses on one M-16DX topic, and is intended as a companion to the *M-16DX Owner's Manual*.

The M-16DX Workshop booklets require M-16DX O.S. Version 1.22 or higher. You can download the latest O.S. for free from [www.RolandUS.com/EDIROL](http://www.RolandUS.com/EDIROL).

## About This Booklet

The M-16DX makes a great companion to a digital audio workstation—or “DAW”—on a personal computer. To learn the basics of using the M-16DX with a DAW, see the Workshop booklet *Using the M-16DX with a DAW*. After you've checked that out, come back here for specific instructions on using the M-16DX with Apple's GarageBand™.



We'll assume you know how to operate GarageBand. To learn about using GarageBand, consult the built-in documentation in its Help menu. We'll also assume the M-16DX is connected to your Mac, and that it's powered-up.

## Understanding the Symbols in This Booklet

Throughout this booklet, you'll come across information that deserves special attention—that's the reason it's labeled with one of the following symbols.



A note is something that adds information about the topic at hand.



A tip offers suggestions for using the feature being discussed.



Warnings contain important information that can help you avoid possible damage to your equipment, your data, or yourself.

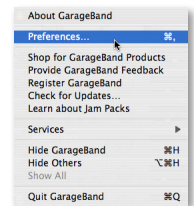
## Setting GarageBand Preferences



Since GarageBand records only at a sampling rate of 44.1 kHz, set the M-16DX to 44.1 kHz as described in the *Using the M-16DX with a DAW* Workshop booklet.

To configure GarageBand so it's using the M-16DX for its inputs and outputs:

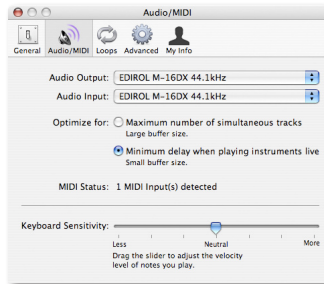
- 1 From the GarageBand menu at the top of the screen, select **Preferences...**
- 2 At the top of the Preferences window, click **Audio/MIDI** to open the Audio/MIDI preferences pane of the Preferences window.
- 3 Set both the Audio Output and Audio Input parameters to **EDIROL M-16DX 44.1 kHz**.



After each selection GarageBand asks “Change audio driver?” Click Yes to proceed both times.



The Audio/MIDI pane should now look like this:



- Click the Advanced Tab at the top of the window, and set Audio Resolution as desired. If you want to
  - record a CD—select **Good** so that audio is recorded at 16 bits, as CDs require.
  - record at higher quality with later conversion—select **Better** to record at 24 bits, with conversion to 16 bits when it’s exported.
  - record the highest-quality audio—select **Best** for 24-bit recording and export for uses other than burning a CD.
- Close the Preferences window.

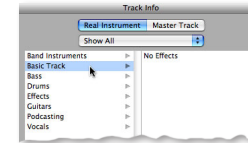
## Setting Up a Track for Recording

### Selecting Audio to Record

- Create a new real instrument track.



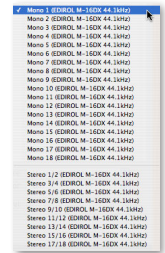
- Select the Basic Track preset in the Track Info panel.



After recording, you can select other presets for your track. They’ll add pre-configured effects to the track, and change its icon.

- From the Input Source popup, select what you want to record from the M-16DX. To record

- a mono input channel to which a mic or instrument is connected—select the desired channel from **Mono 1** to **Mono 4**.
- a stereo input channel to which you’ve connected a keyboard or some other stereo device—select the desired channel from **Stereo 5/6** to **Stereo 15/16**.
- the stereo mix bus—select **Stereo 17/18**.
- a pair of mono channels onto a stereo Garageband track—select **Stereo 1/2** or **Stereo 3/4**.
- one side of a stereo channel—select the desired channel from **Mono 5** through **Mono 12**.



Only select Stereo 13/14, Mono 13, or Mono 14 when the M-16DX’s USB button isn’t lit.



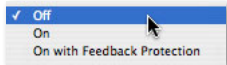
All of the channels have “(EDIROL M-16DX 44.1KHZ)” at the end of their name. We’ve left out this phrase here just to make things easier to read.

## Turning Off Software Monitoring



As we noted in the *Using the M-16DX with a DAW Workshop* booklet, you do have the option of listening through GarageBand if you want to hear its effects as you record. However, since you'll encounter latency doing this, we recommend listening directly through the M-16DX.

- 1 Set the Monitor popup below Input Source to *Off*.



---

## Troubleshooting

If you experience problems recording or playing back audio, GarageBand's built-in Help provides steps you can take to solve your problem. Search in Help for "optimize"—the page of steps is called "Optimizing GarageBand Performance." In addition to following these steps, raising the Audio Buffer size in the M-16DX's control panel may also help, though it may also increase latency if you're working with soft synths in GarageBand.

---

## The End

We hope you've found this workshop helpful. You'll find other M-16DX Workshop booklets available for downloading at [www.RolandUS.com/EDIROL](http://www.RolandUS.com/EDIROL).